

\$1,150,000 - 100 Ridge Rd 1421, Kapalua

MLS® #391746

\$1,150,000

1 Bedroom, 2.00 Bathroom, 1,125 sqft
Condominium on 21.80 Acres

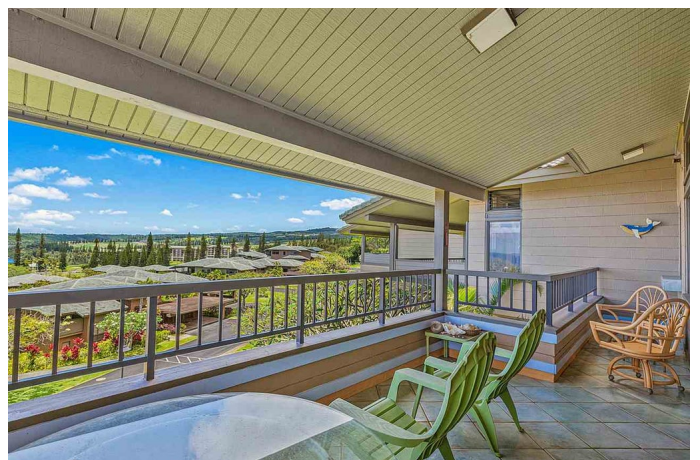
Kapalua Ridge, Kapalua, Hawaii

Top floor, single level unit in building 14, with fantastic views of the ocean, the island of Molokai and Honolua Bay. Large lanai, perfect for entertaining. This unit was remodeled in 2006 as a wonderful beach cottage with the wooden table and chairs and out door Adirondack style chairs as well. it has not been rented since 2006. It is offered furnished, but all artwork is excluded. Private entry, not shared with other neighbors. 1 parking stall in the carport, with storage unit. There is ample parking for guests. Enjoy a stroll to the world famous beaches at Napili Bay, Kapalua Bay or Oneloa Bay. Many hiking and walking trails nearby, with various levels of difficulty. Owners and guests can entertain at the Ridge Pavilion featuring a complete kitchen, large covered sitting area, barbecues and large pool.

Built in 1979

Essential Information

MLS® #	391746
Price	\$1,150,000
Bedrooms	1
Bathrooms	2.00
Square Footage	1,125
Land Tenure	Fee Simple
Acres	21.80
Year Built	1979



Type	Condominium
Sub-Type	Condo
Status	Pending - Cont. To Show

Community Information

Address	100 Ridge Rd 1421
Area	Kapalua
Subdivision	Kapalua Ridge
City	Kapalua
Building Name	Kapalua Ridge
State	Hawaii
Zip Code	96761

Amenities

Parking Spaces	1
View	Ocean
Waterfront	None
Has Pool	Yes
Pool	In-Ground

Additional Information

Date Listed	June 1st, 2021
Days on Market	59
Monthly Maintenance Fees	765.00

Listing Details

Listing Office	Hawaii Life (KAP)
----------------	-------------------

Listings provided courtesy of the REALTORS® Association of Maui. IDX information is provided exclusively for consumers' personal, non-commercial use and may not be used for any purpose other than to identify prospective properties consumers may be interested in purchasing.