

# \$885,000 - 1119 Hoalu St, Wailuku

MLS® #392301

## \$885,000

6 Bedroom, 3.00 Bathroom, 2,183 sqft  
Residential on 0.12 Acres

Waiehu Terrace, Wailuku, Hawaii

Well located spacious house on the top of Waiehu terrace, this property offers 5 bedrooms 3 baths Plus a spacious studio perfect for a large extended family, or rental potential. whichever fits your needs. Upstairs lanai offers spectacular mountain views. Security cameras are present on the property.

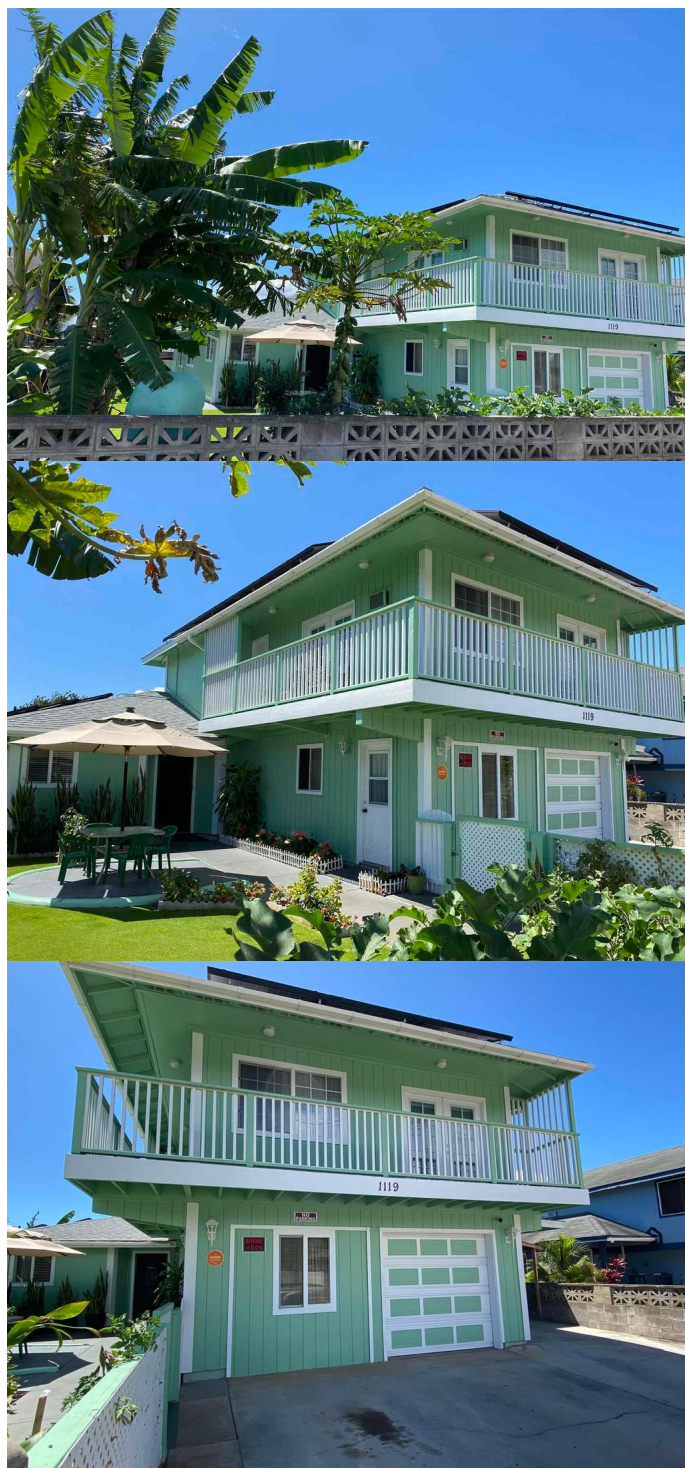
Built in 1994

## Essential Information

MLS® #	392301
Price	\$885,000
Bedrooms	6
Bathrooms	3.00
Square Footage	2,183
Land Tenure	Fee Simple
Acres	0.12
Year Built	1994
Type	Residential
Sub-Type	Single Family
Status	Pending - Cont. To Show

## Community Information

Address	1119 Hoalu St
Area	Wailuku
Subdivision	Waiehu Terrace
City	Wailuku
State	Hawaii
Zip Code	96793



## **Amenities**

Utilities	County Water, County Water Meter Ins
Parking Spaces	2
View	Mountain/Ocean
Waterfront	None

## **Exterior**

Lot Description	Level
-----------------	-------

## **Additional Information**

Date Listed	July 13th, 2021
Days on Market	75
Zoning	Urban, R-1 Residential
Monthly Maintenance Fees	0.00

## **Listing Details**

Listing Office	Fine Island Properties, LLC
----------------	-----------------------------

Listings provided courtesy of the REALTORS® Association of Maui. IDX information is provided exclusively for consumers' personal, non-commercial use and may not be used for any purpose other than to identify prospective properties consumers may be interested in purchasing.